

PowerCAD SiteMaster

Quick Starter: Main Functions of PowerCAD SiteMaster 3 Pro CE



1. Before You Begin

Recommendation: Before using PowerCAD SiteMaster software, read and understand the manual of your Pocket PC/PDA, especially about using stylus and Bluetooth. Also read the manual of your laser meter, especially on using Bluetooth.

Switch On

1. Laser meter, e.g. Leica Disto plus:

- Switch on device
- Switch on Bluetooth, Symbol will blink

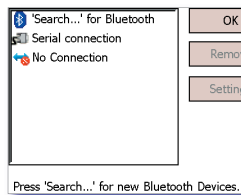
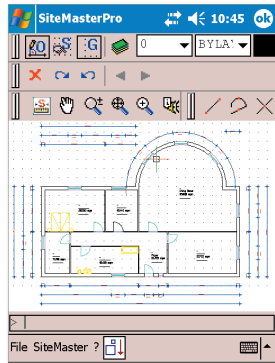
2. Pocket PC

- Switch on device

- Start PowerCAD SiteMaster :
Windows Menu > Favourites > SiteMaster Pro or
... > Programs > SiteMaster Pro

The Bluetooth connection wizard assists you in setting up connection to laser device.

- Select Search... for Bluetooth to find Bluetooth devices. Found devices will be listed
- Select device from list, then Connect
- Laser meter confirms with beep and permanent Bluetooth symbol
- SiteMaster starts with Icon Menu »Plan Menu«
- Continue e.g. with Wall/Column > Walls



Switch Off

1. PowerCAD SiteMaster

- Save drawing
- Close Icon Menu (if open)
- File > Exit, Bluetooth connection is closed automatically
- Switch off Pocket PC

2. Laser distancemeter:

- Turn off 2nd mode (Leica Disto plus)
- Switch off Bluetooth, symbol disappears from display
- Switch off laser device

File Formats

PowerCAD SiteMaster saves and opens these CAD file formats:

- FLX: SiteMaster drawing
- DWG: AutoCAD
- DXF: DXF format
- DWF: Design-Web-Format (export only)

2. SiteMaster Layout in Windows CE

Title Bar



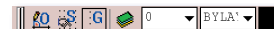
Windows symbol on the left opens pulldown menu with Organizer, Programs and Settings folders.

When running SiteMaster, OK on the right serves to confirm command requests and to close Icon Menus.

Toolbars and Command Line

By clicking the grips on the left side you can toggle visibility of the toolbars. Display the tooltip for an icon by keeping the stylus on it.

- Properties



Ortho Mode, Snap Mode, Grid Display, Layer Manager, Layers, Linetype, Colour



- Options

Cancel, Redo, Undo, Previous/Next Option for current command



- Snap

Snap to: End point, Mid point, Intersection, Tangent, Center, Base point, Closest point, Perpendicular to, Quadrant point



- Main Toolbar (Archtools)

SiteMaster Icon Menu, Dynamic Pan, Dynamic Zoom, Zoom Extents, Zoom Window, VoiceNote

- Drawing Space
- Command Line



If the Keyboard is displayed, the Command Line will show several lines of the command history. This way you can check remarks and options for commands if necessary.



- Task Bar with Pulldown Menu

Opens the SiteMaster Help on your Pocket PC (you find the complete PowerCAD SiteMaster XP Online Help on the PC you have used to install PowerCAD SiteMaster CE)

Hide/Show toolbars, increases viewable drawing space

Keyboard and character recognition

Recommendation: Always display standard Toolbars and Command Line.

Show and Hide Standard Toolbars and Command History:

Pulldown Menu: Tools > Configure > Desktop...

(in Extended Menu, not in Simplified Menu)

Pulldown Menus

SiteMaster has two Pulldown Menu variants:

- The default Simplified Menu holds the essential commands.
- The Extended CAD Menu contains a more comprehensive set of commands.

Change between Simplified and Extended CAD Pulldown Menu:

Pulldown Menu: File > Load Extended Menu and
File > Load Simplified Menu, respectively

Icon Menus

Icon Menus are SiteMaster's special way to measure and draw efficiently. They are designed to support you with all major surveying tasks in an easy-to-use way. Perform complex drawing tasks without having to think about cryptic CAD commands.

Using Pulldown Menus and Command Line to run commands is only recommended for advanced users.

Goto Menu > Goto Menu

GROUND FLOOR > Select Floor ID

... Icons for SiteMaster Functions

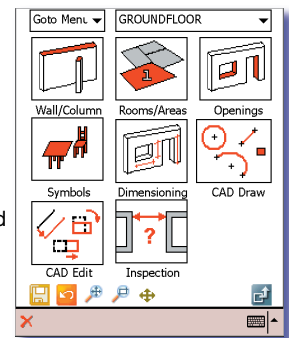
Save, Undo,

Zoom Extents, Zoom Window, Pan

Go to next submenu (if one exists),

Go to next higher-ranking Icon Menu, in Main Menu: Close Icon Menu

With an open Icon Menu the Task Bar shows the Cancel Icon and the Keyboard selector, but no Pulldown Menu.



Recommendation: Use the Icon Menus right from the beginning.

They lead you through the important working steps.

Show Icon Menus:

- Click in Main Toolbar or
- Pulldown Menu: SiteMaster > Start Icon Menu

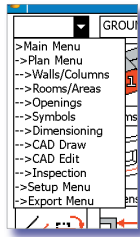
Hide Icon Menus:

- Click in Title Bar, in Task Bar or Up in Icon Menu until Icon Menu closes

If you hide (close) an Icon Menu, SiteMaster will remember which one and open this one the next time.

Icon Menu support you when

- Measuring and drawing walls, columns and openings,
- Dimensioning, adding remarks and markup,
- Working with Symbols and Floors,
- Using CAD commands and checking measurements,
- Adjusting Settings for PowerCAD SiteMaster and the current drawing,
- Performing file operations and data export.



The 12 Icon Menus are hierarchically sorted. From the Main Menu you can access Plan Menu, Setup Menu and Export Menu (as well as New, Open and Save As command). From the Plan Menu you access Walls/Columns, Rooms/Areas, Openings etc. Navigate between Icon Menus:

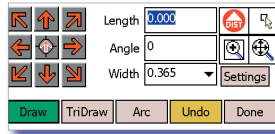
- Select from »Goto Menu« in upper left corner of Icon Menu or
- Use Up and select Icon in Icon Menus itself

3. Example

Measure and Draw Room

SiteMaster lets you easily draw rooms with walls in angles of 90° and 45°:

- Open Icon Menu »Plan Menu«, select Wall/Column > Walls (If the drawing is not empty select New here.)



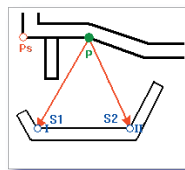
- Click anywhere into drawing space to select first point of wall
- Use Wall dialog to draw wall segments: Select Width = wall thickness None for drawing only one (inner) wall line. Activate laser meter with DIST, adjust it to wall length, measure wall segment length with DIST, press appropriate direction arrow button to draw wall segment

Recommendation: Select an orientation for your drawing that you can keep consistently for the complete drawing.

- Add more wall segments
- Wall line can be closed by SiteMaster automatically: Click Done > Close Wall, Select Direct Distance or Rectangular Distance
- Room is drawn, Icon Menu »Wand« opens

Triangulate Wall Segments

If you are not sure whether a wall segment will be in a 90° or 45° angle, you can add it in any angle based on two known points (»Stations«) and two distances.



- In the Wall dialogue select TriDraw (select 90° Draw to go back to wall segments in 90° and 45° angles)
- Click on Select Stations and select two base points in drawing, click to mark the side where wall segment shall be drawn

- Measure length from both Stations to wall end point, click Draw

Click on to display explanation. Click on explanation itself to close it.

Name and Mark Room

- Icon Menu: Rooms/Areas > Assign New

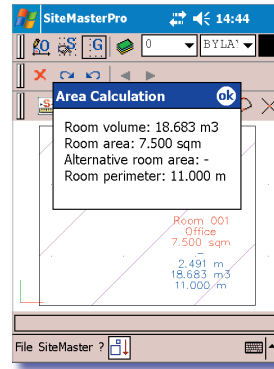
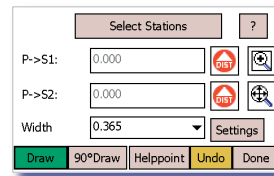
- Select a room name from list or type in manually

- Place cursor in field »Room Height«, position laser meter, measure Room Height

- Click OK, select insertion point within appropriate room

- Confirm area and perimeter values with OK, text block is drawn

For setting the room stamp the (inner) wall line has to be closed. With doors and windows the inner wall line is added automatically.



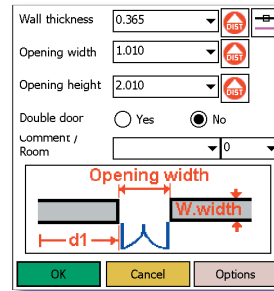
Insert Door

- Icon Menu: Openings > Door

- Select wall element near the end where you can measure the distance, measure distance from door to corner by pressing the DIST button twice and any arrow key

- Door Dialog: measure and enter Wall Thickness, Opening Width and Opening Height, check/uncheck Double Door, click OK

- Click in drawing for side of second wall line



(SiteMaster can assign a possibly existing outer wall line automatically. You can also use the Pick Button to select it directly from the drawing. The correct wall thickness is needed to attach the connected room.)

- In Dialog »Next Room« you can opt to add the wall segments left and right from the door: measure distance to next left and right corner in connected room, then click OK

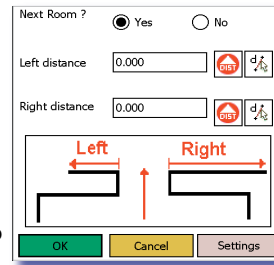
- Click OK to place text

- Select hinge point in drawing

- Click End to stop drawing doors into that wall

- Close Icon Menu to check the drawing: SiteMaster has drawn the outer wall lines (in the connected room) as measured

SiteMaster assumes, that often several openings have to be



measured and drawn into a wall. That's why you can proceed directly to entering the next opening in the same wall. Use Cancel to finish this sequence.

Draw Connected Room

- Icon Menu: Wall > New
- Select wall near the corner to start with
- Draw wall segments

Insert Window

Measuring and Drawing a window is similar to creating a door. As outer wall lines are usually difficult to measure, SiteMaster adds them in the length of the corresponding inner wall lines.

Insert VoiceNote

- In the Main Toolbar select VoiceNote
- Select insertion point in drawing space
- Click Record button, speak message into microphone of PDA, click Stop when finished, you can also type in text comment
- Close with , SiteMaster inserts the VoiceNote in the drawing

Save

- Icon Menu: Click on Save
- At first time enter File Name, Folder, File Type (format) and Location (»Save As«). Confirm with
- From second time on saves drawing directly.

You can find more information on PowerCAD SiteMaster in the PowerCAD SiteMaster Help, at www.givemepower.de and at www.powercad-sitemaster.com. The content of this document is subject to change. Trademarks and Registered Trademarks are not marked in this document.

»CAD Anywhere« – Innovative mobile CAD- and Building Surveying Solutions of GiveMePower GmbH:
PowerCAD Pro, PowerCAD CE, PowerCAD SiteMaster and PowerCAD SiteMaster Elevation