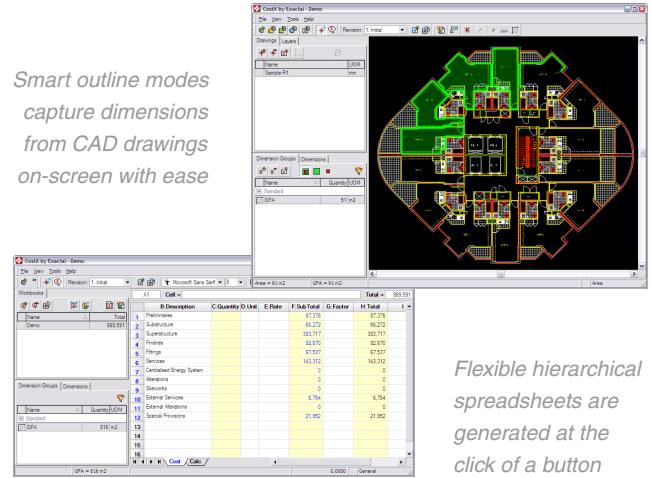




Next generation estimating software.

Exactal's CostX is the powerful estimating solution for the property and construction industries. Now you can easily cost using live dimensions from CAD files without the need to learn complicated drawing software.

Smart outline modes capture dimensions from CAD drawings on-screen with ease



Flexible hierarchical spreadsheets are generated at the click of a button

"...truly next generation estimating software."

"For the first time clients and designers can see on-screen what is included in the cost estimates and what is affordable."



CostX allows for the simple capture of CAD dimensions and management of scope throughout the lifecycle of construction projects. The program features a variety of intelligent outline modes that accurately capture live dimensions on-screen.

Developed by industry experts and leading software developers, CostX features a highly intuitive interface that is quick to learn and simple to use.

Work seamlessly with existing industry standards as CostX provides an instant cost benefit saving on measurement time, printing costs, paper handling, estimate review time, mobility (no longer office bound), report output time and reducing estimate errors.

With support for existing drawing formats such as Autodesk DWG, DXF and DWF, as well as the ability to import scanned or faxed drawings, highly accurate and flexible cost plans and reports can be generated in just minutes and exported to a wide variety of formats including PDF, Excel, and HTML.

CostX enables many people to concurrently work on the same project and automatically manages scope between revised drawings. Free form hierarchical spreadsheets and reports can be generated from supplied or custom cost libraries. Specialised cost libraries can also be automatically built from real projects to enhance the accuracy of future estimating.

Smart Technology.

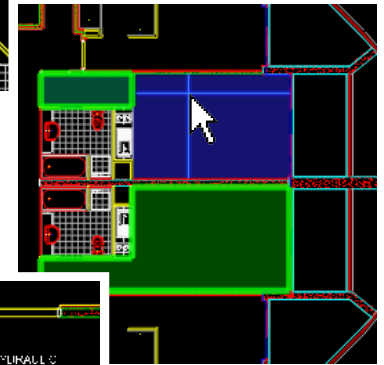
A direct CAD-to-estimate link is critical to allow re-use of measured data and provide a platform for effective scope management. CostX's smart outlining modes are optimised for the quick capture of areas, lengths, and object counts, including positive and negative modes, sticky outlining, "quick point" area capture, Reo steel calculations and more. Using these simple techniques, the *Cost Geometry*TM of buildings can be captured quickly, providing a live link between design and cost that can be easily monitored across drawing revisions through an intuitive revisioning process.

Full Control.

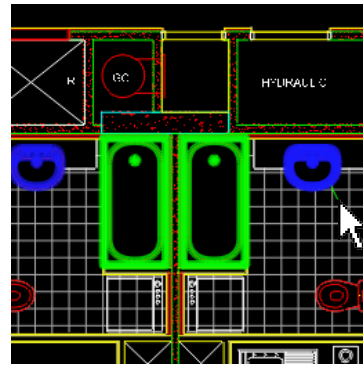
CostX features powerful system administration which allows you to fully customise every aspect of your workflow from project management and standard dimension groups, to geographical locations, pricelists and more.



"sticky" outlining makes capturing awkward areas easy



"quick point" area capture for accurate single click dimensions

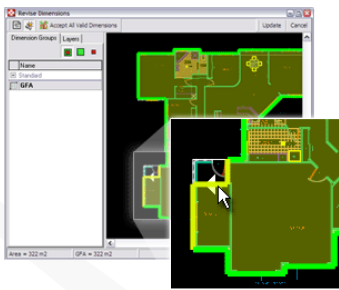


CostX easily identifies similar objects in count mode

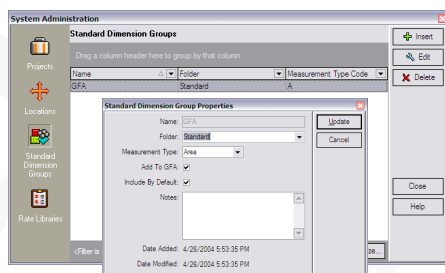
CostX can also directly import projects from existing standard estimating software, making the transition seamless and the benefits immediate.

System Requirements

- Windows XP
or Windows 2000 Professional
- Pentium III 800MHz or faster
- 256MB RAM +
- Internet Connection
(during activation)



Individually adjust dimensions across drawing revisions



Customisation through system administration gives you complete control over projects and workflow



For interactive demos and updates, learn more at www.exactal.com

Exactal Pty Ltd ABN 84 104 543 197
PO Box 1694, Toowong QLD 4066, AUSTRALIA
Ph:+61 7 3870 2666, www.exactal.com, info.AU@exactal.com